

Axon Body 2 Camera Battery Replacement



Step 1

Ensure you have the required supplies:

- Lint-free wipes
- A T6 driver
- A new Axon Body 2 camera battery
- Approximately 5 minutes of time



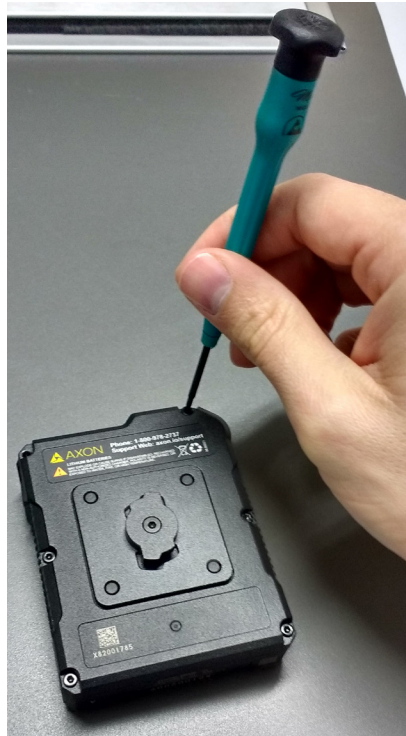
Step 2

Check the new battery to make sure the gasket is fully seated and free from any foreign material that could impede the ability of the gasket to create a good seal. If the gasket is not seated properly, visit www.axon.com and view the Support options, or call 1-800-978-2737.



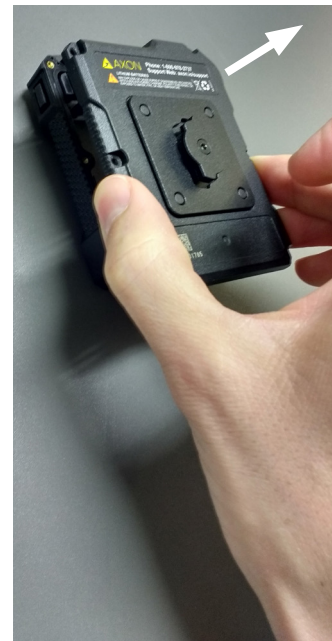
Step 3

- 1 Make sure the camera is powered off.
- 2 Remove all 6 screws from the back side of the Axon Body 2 camera.



Step 4

Gently remove the back cover.



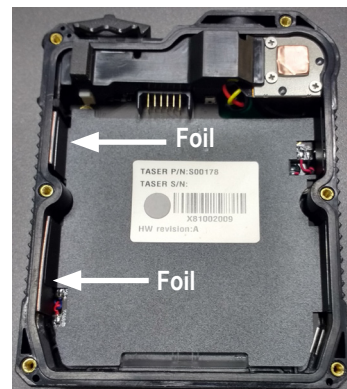
Step 5

Make sure the mating surface of the camera is clean and free of any foreign debris. If it is dirty, use a lint-free wipe to gently clean the camera.



Step 6

- 1 Gently place the new battery onto the camera unit.
- 2 Be careful not to damage the foils on the side.



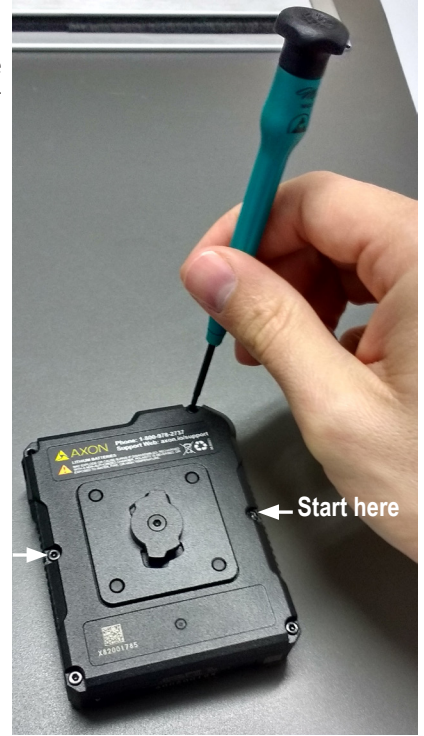
Step 7

Make sure the new battery sits flush against the camera.



Step 8

Starting with the 2 middle screws, gently begin tightening all 6 screws.

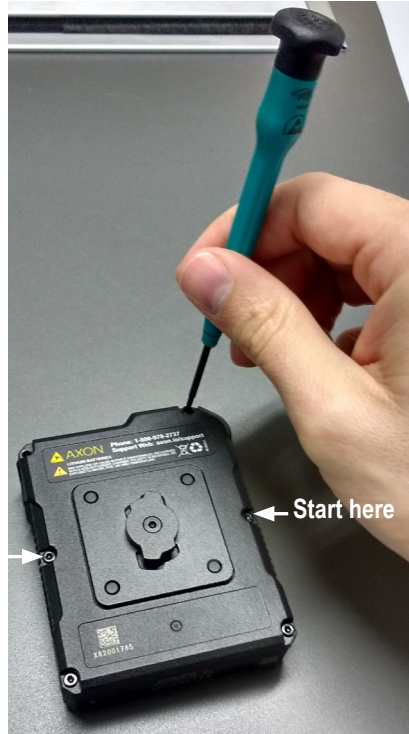


Step 9

1 Make sure the power switch works.

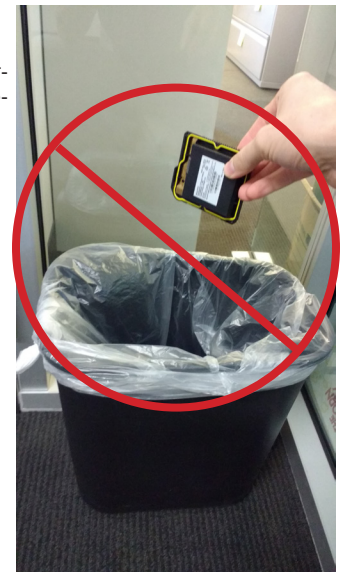
2 Finish tightening the screws.

- Tighten the screws to 20 ounce-inches (a little less than half the torque it takes to unscrew a small bottle of soda).
- Start with the middle screws, then screw down on opposite corners.



Step 10

Dispose of the old battery in accordance with your local regulations regarding battery disposal.



Kimwipes and Kimtech are trademarks of Kimberly-Clark Worldwide, Inc.

▲, ▲ AXON, Axon, and Axon Body 2 are trademarks of Axon Enterprise, Inc., some of which are registered in the US and other countries. For more information, visit www.axon.com/legal. All rights reserved. © 2017 Axon Enterprise, Inc.