





Axon Fleet MDT Requirements

Rev: C
Release Date: February 2020

Microsoft and Windows are trademarks of Microsoft Corporation registered in the US and other countries.

Wi-Fi is a trademark of the Wi-Fi Alliance.

  Axon, Axon Evidence (Evidence.cm), Axon Fleet, and Axon View XL are trademarks of Axon Enterprise, Inc., some of which are registered in the US and other countries. For more information, visit www.axon.com/legal.

All rights reserved. ©2020 Axon Enterprise, Inc.

Table of Contents

Axon Fleet MDT Requirements	4
Administrative Rights and Privileges	4
Communications	4
Available Disk Space	4
RAM/Memory.....	4
Windows Operating Systems	4
Dedicated USB Port	4
Dedicated Ethernet Port	5
Power Management	5
Recommended Settings	5
Recommended USB Power Management Configuration	5
USB Selective Suspend	7

Axon Fleet MDT Requirements

Important: Each vehicle equipped with the Axon Fleet 2 system must have an MDT to facilitate wireless evidence offload, settings changes, and updates.

Administrative Rights and Privileges

Elevated (Run as administrator) privileges to:

- Anti-virus Application
- Device Manager/Properties
- Local policy
- Windows Command Line
- Windows Firewall
- Windows Services Management

Communications

Prior to the Installation of the Axon Fleet system, the vehicle's the MDT must communicate with Evidence.com.

Available Disk Space

25GB or more.

RAM/Memory

8GB or more.

Windows Operating Systems

- Windows 7 (32-bit and 64-bit)
- Windows 10 (32-bit and 64-bit)

Dedicated USB Port

The system requires the MDT to have one dedicated and available USB 2.0 and 3.0 compatible port reserved for the Bluetooth BLE Adapter. Preferred location is on the mobile docking station, if applicable.

Dedicated Ethernet Port

The system requires the MDT to have one dedicated and available Ethernet port reserved for an Ethernet cable from router. 1Gbps preferred but not required. Preferred connection is on the mobile docking station, if applicable.

Power Management

Since the Axon Fleet system leverages the vehicle's MDT to run a software application (Axon View XL), the MDT must be powered ON for the videos to offload.

- Removing or powering OFF the MDT will interrupt evidence upload.

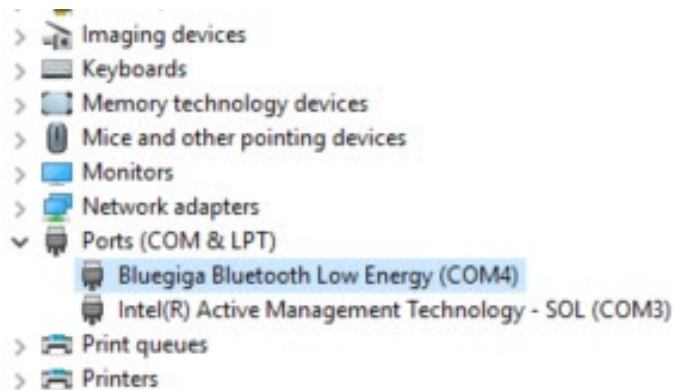
The MDTs power should match the behavior of all other electronics within the vehicle.

Do not allow the computer to turn off the USB and Ethernet adapter to save power.

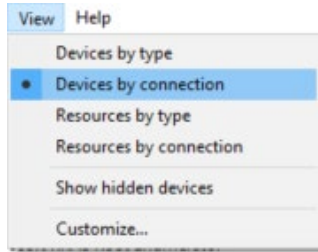
Recommended Settings

Recommended USB Power Management Configuration

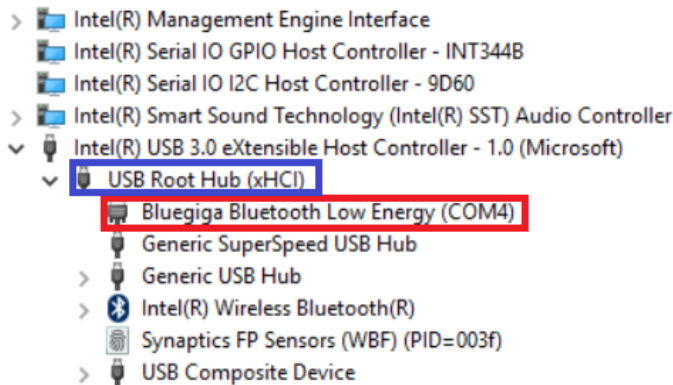
1. Open Device Manager.
2. Expand the Ports (COM & LPT) information. Locate and select **Bluegiga Bluetooth Low Energy**



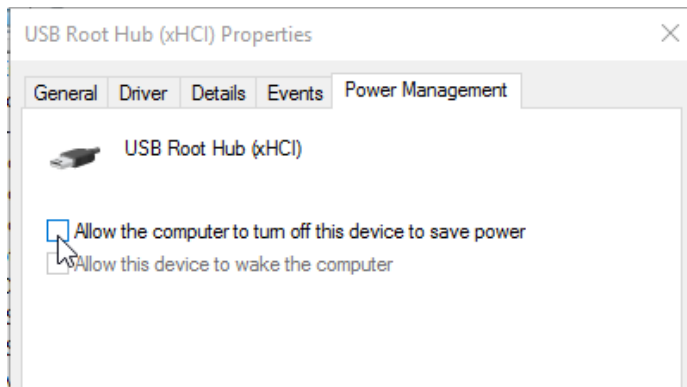
3. On the Device Manager menu, click on **View** and select **Devices by connection**.



4. Identify the **USB Hub** the dongle is connected to, right-click on the hub and select **Properties**.

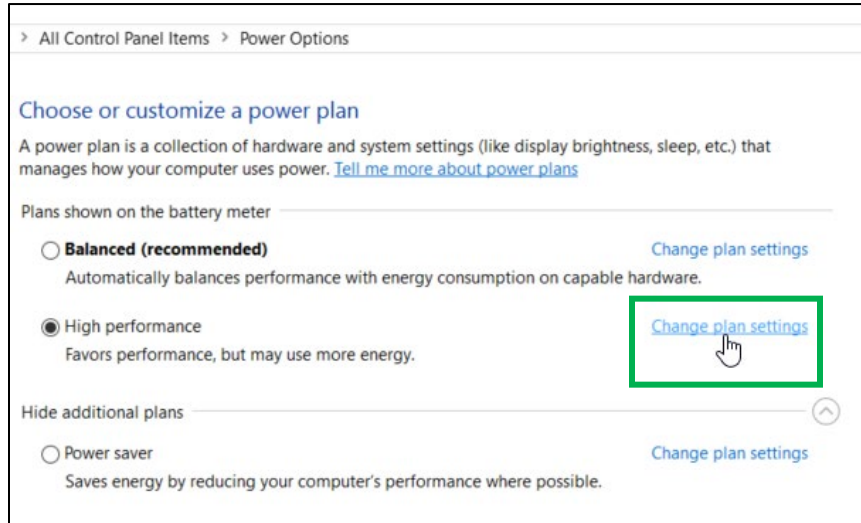


5. Under the Power Management tab, clear the **Allow the computer to turn off this device to save power** check box and click **OK**.

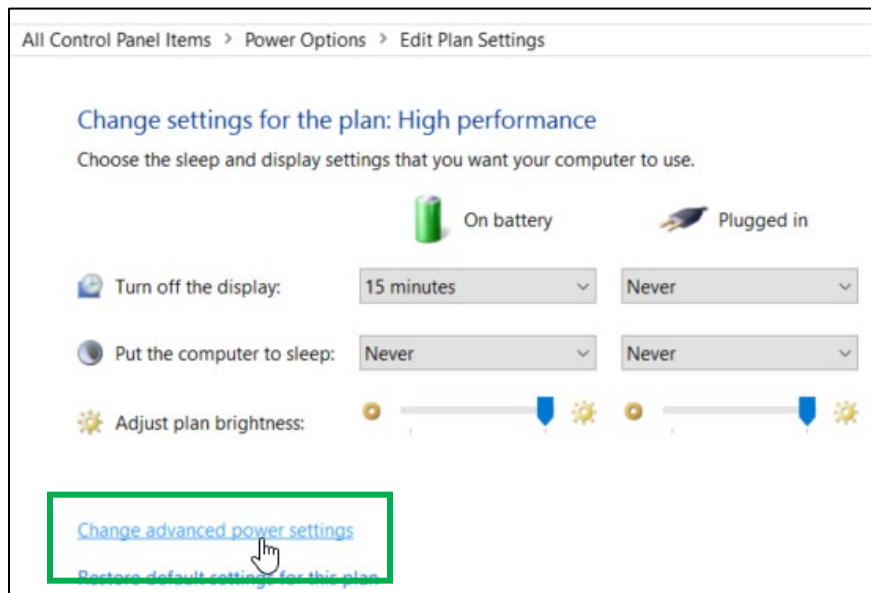


USB Selective Suspend

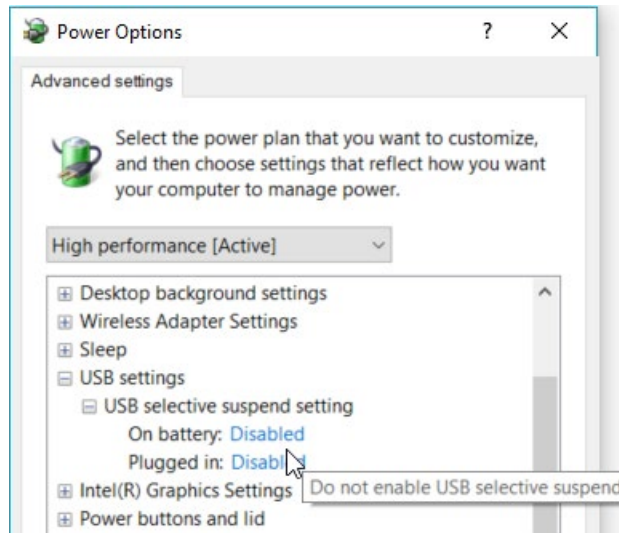
1. Open Power Options (Control Panel > Power Options).
2. Click **Change Plan Settings** adjacent to the currently applied plan.



3. Click **Change Advanced Power Settings**.



4. Expand USB Settings and USB Selective Suspend Setting. Verify the settings are **Disabled**.



5. Click **Apply** and then click **OK**.